

P795 Precision hand held Thermometer (Pt100) with data logging for 4,000 measurements



- **2-channel-instrument, for Pt100 according EN 60751,**
- **Simultaneous display of two measured values or differential measurement**
- **Recording maximum, minimum, hold and average values(average over user selectable time)**
- **Integrated calibration function(According EN60751, up to 20 points)**
- **High measuring accuracy ($\pm 0,010$ °C)**
- **Resolution of 0.001 °C below 200 °C**
- **Password protection for calibration function**
- **USB interface**
- **Manufacturers test certificate included**
- **Data Logger function for up to 4000 measurements**
- **Optional DKD or ISO- system calibration certification.**

Areas of application

The universally applicable processor-controlled instruments are ideal for measuring operations in which high accuracy counts or the possibility of online documentation via PC is demanded.

The key issue for all instruments is the traceability of measurement to a recognised national standards laboratory. DKD (German UKAS equivalent) certified test equipment is recognised, without any further specifications, as an instrument of traceability in Europe and in many other non-European countries.

Certification for existing test equipment can also be provided at any time.

- Reference system for your laboratory
- Service-Area
- Quality insurance

- Accurate longterm monitoring

Technical data (P795 with Eprom-probes)

Measuring channel 1/2	Pt100(EN 60751)
Range	-200...+850 °C
Accuracy Pt100	+,-0,015 °C from -50 °C...+199,99 °C otherwise +,-0,025%
Resolution	0,001 °C 0,01 °C remaining range
Memory	Appr. 4000 Measurements
Clock	Battery-powered real time Quartz clock, (adjustable via PC)
Digital Output	USB
Probe Connectors	8-pole DIN 45326
Working temperature	0 °C ... +40 °C
Display	2-lines LCD
Housing	plastic
Dimensions	220 x 98 x 39 mm
Weight	500 g
Power supply	9 V battery (optional Power supply 230 VAC)

Order Numbers for Instrument and Accessories

	Order No.
P795 Instrument, 2-channel, Pt100 -200..+850 °C, 001 °C Resolution	5000-0795
USB-cable	5090-0046
Windows Software DE-Graph for Online-documentation & Download	5090-0081
Instrument case	5600-0007
USB-Power pack	5600-0091
9 Volt Block battery for replacement	5990-0001
9 Volt Block-Accu	5990-0003

Order Numbers for probes

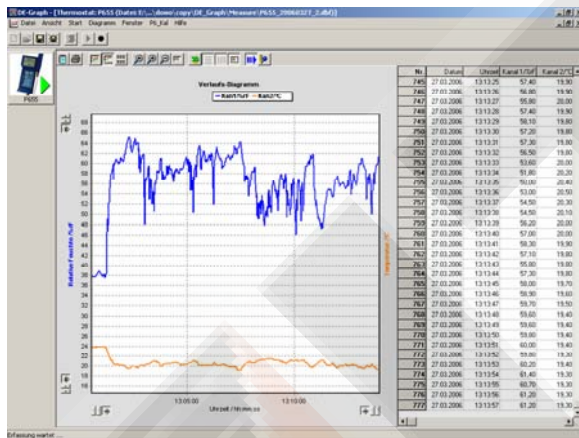
Resistance probe, Pt100, with Eprom for the linearization polynomial, Platinum-ceramic sensor EN60751, 4-wire, silicon cable 100 Ohm (R0ABC-Coefficients at 0 °C/75 °C and 150 °C)

	Order No.
Immersion probe, with handle, mineral-insulated, WS 1.4571-200.. +450 °C, 150x3 mm	6000-1773
Immersion probe, with handle, mineral-insulated, WS 1.4571-200...+450 °C, 300x3 mm	6000-1774
Immersion probe, with handle, mineral-insulated, WS 1.4571-200.. +450 °C, 300x6 mm	6000-1784

Windows Software DE-Graph

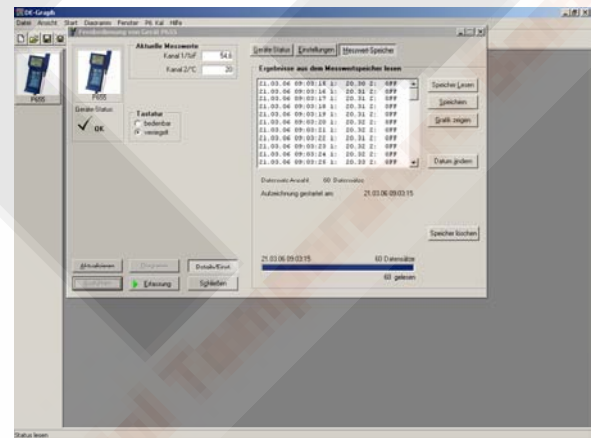
- Automatic device detection
- Interfaces-scan function independently seeking the connected Com Port
- Online documentation of the data logging via PC "
- Convenient data download; DBF format as a data file allows easy export to Excel "
- Visualisation of data in tabular and graphical format
- Extensive graphics functions (drag and zoom, Auto Scale...)
- Calibration function to manage sensor calibration curves, including activation password
- English and German language, including Online Help

Automatic devices and interface detection

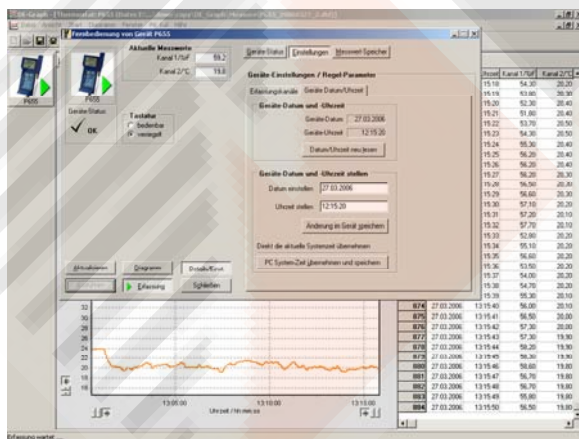


Graphic and Tabular visualisation

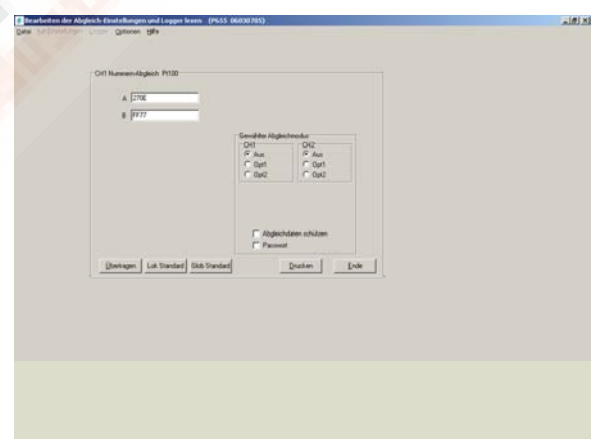
Simple language: German and English



Data download



Clock module: Time set by software



Manage Sensor Calibration