

Darca Plus Tour

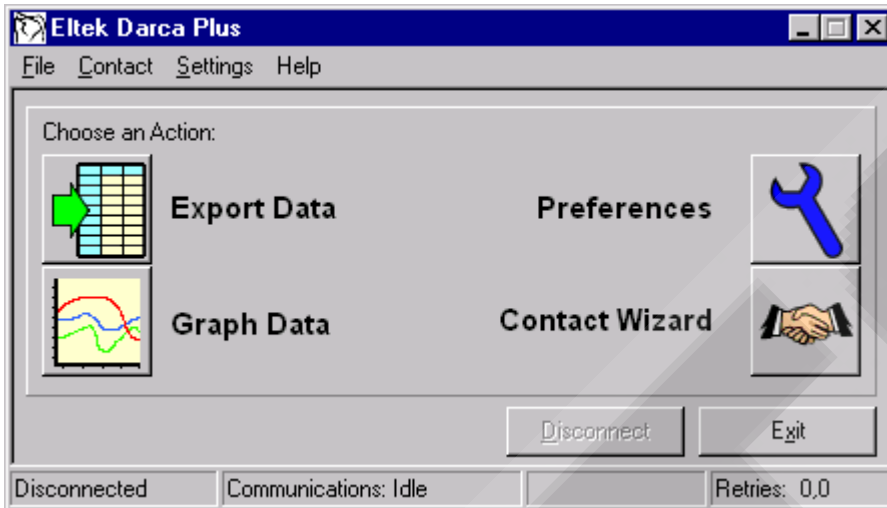
The Darca Plus Tour can be taken in two different ways:

1. **Interactive**

Click on parts of the screenshot or on the links in the text to find out more about a particular part of the program.

2. **Guided Tour**

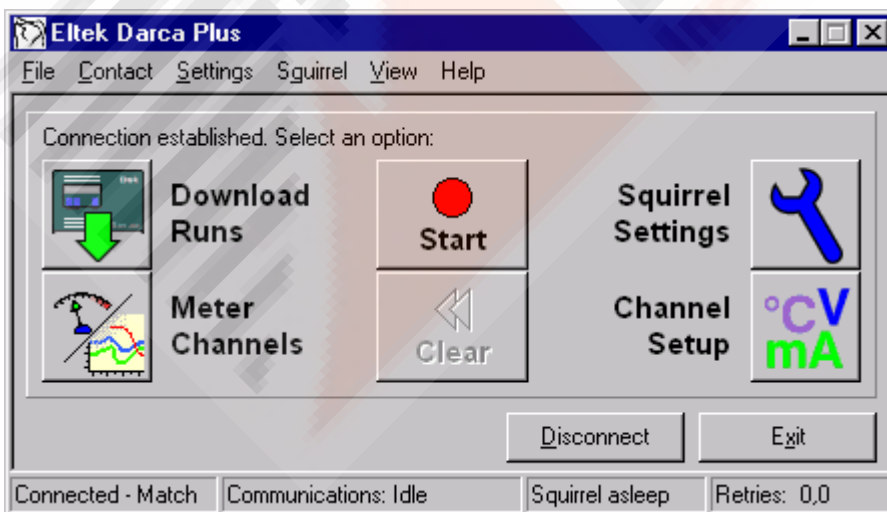
Use the green 'Next' and 'Back' buttons to be shown through Darca's main features.



The Main Window of Darca Plus presents the four main options in a clear large button format:

- [Export Data](#) - export a datafile for viewing within a spreadsheet, such as Excel
- [Graph Data](#) - view a graph and statistics of a Squirrel datafile
- [Preferences](#) - configure Darca options
- [Contact Wizard](#) - contact a Squirrel connected to your PC or via a modem

Darca Plus Tour - Contact Window

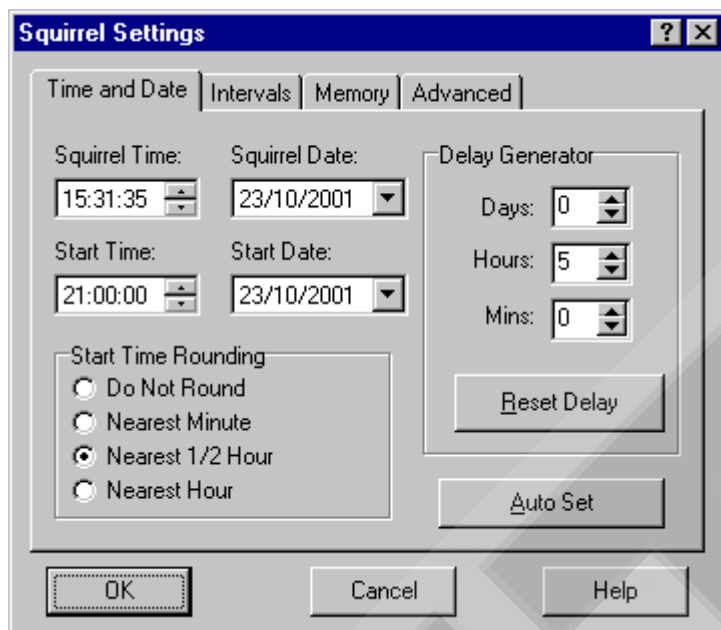


The Contact Window of Darca Plus appears when a Squirrel has been contacted. The status bar at the bottom displays the current communication status of the Squirrel. The Status Window then appears and shows you exactly how the Squirrel is configured and operating. The following options are available on the Contact Window:

- [Download Runs](#) - Download the data from the Squirrel onto your PC. Data is divided into 'runs', each of which spans a particular period of time.

- [Meter Channels](#) - View the current values of the Squirrel's inputs in meter form or graph form.
- [Squirrel Settings](#) - Configure how you wish the Squirrel to operate (e.g. logging times and dates, logging and memory modes).
- [Channel Setup](#) - Configure which input channels you wish to use on the Squirrel and the ranges of those inputs.

Darca Plus Tour - Squirrel Settings and Status



- The Squirrel Settings Window provides complete operational control of the Squirrel's general settings.
- Using the Squirrel Settings and Channel Setup Windows enables you to avoid using the buttons on the logger itself. This is especially useful for sites where the datalogger is hard to reach.
- The four tabs provide access to the various areas of Squirrel configuration.
- Squirrel configuration may be saved as a Setup File and then applied to other Squirrels
- Delay Generator and Memory Size Calculator tools assist in setting the Start and Stop time

Darca Plus Tour - Channel Setup

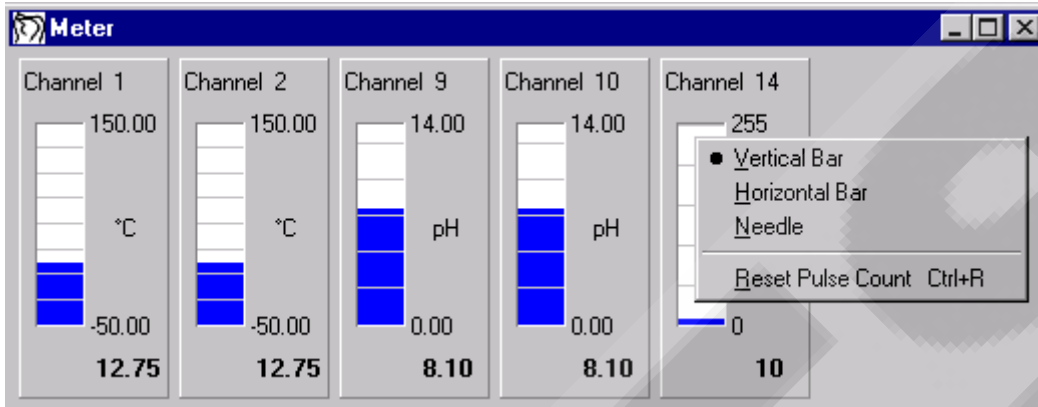
Channel	Ident	Log?	Input	Range	Meter	Unit
1	Main Hall	Yes	U type Thermistor	-50.00 to 150.00	Off	°C
2	Drawing Room	Yes	U type Thermistor	-50.00 to 150.00	Off	°C
3	Library	Yes	U type Thermistor	-50.00 to 150.00	Off	°C
4	Loft	Yes	U type Thermistor	-50.00 to 150.00	Off	°C
5	Channel 5	No				
6	Sample Weight	Yes	EU - Voltage	0.00 to 100.00	Off	g
7	Channel 7	No				
8	Channel 8	No				
9	Sample 1	Yes	Voltage	0.00 to 14.00	Off	pH

- The Channel Setup Window provides an easy to use interface for configuring how the input channels on the Squirrel should be used.
- Channels can be turned on or off to control whether they appear in the meter window and are logged.

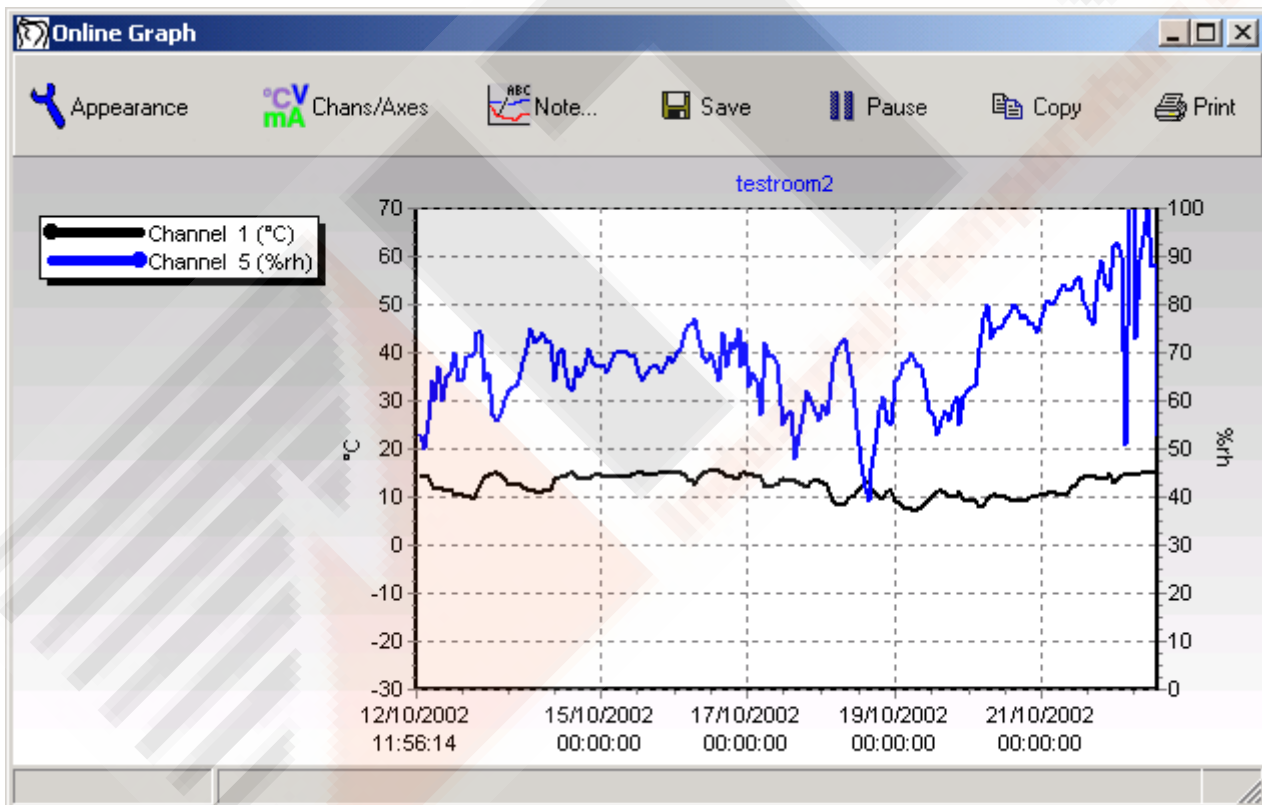
- The range and input of each channel can be chosen in the Edit Channel dialog or simply copied from another channel with the copy and paste tools.
- Squirrel configuration may be saved as a Setup File and then applied to other Squirrels.

Darca Plus Tour - Metering Window

Darca Plus contains two metering tools: the simple bar/needle...



...and the real time graph:



- The bar/needle window (top) provides a clear instantaneous representation of the Squirrel's input channels:

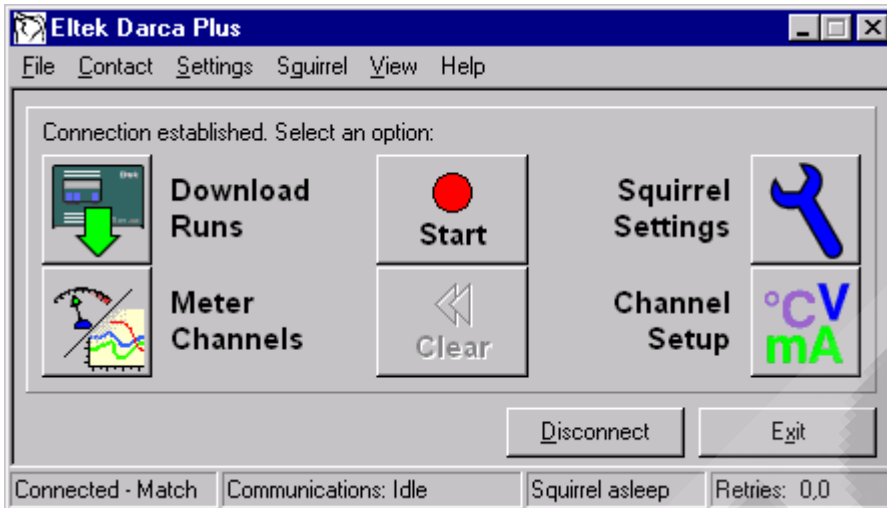
Channels in alarm are displayed in red.

Channels in the window may be grouped to reflect the physical location of input sensors.

- The real time graph gives a time-span representation and updates constantly.

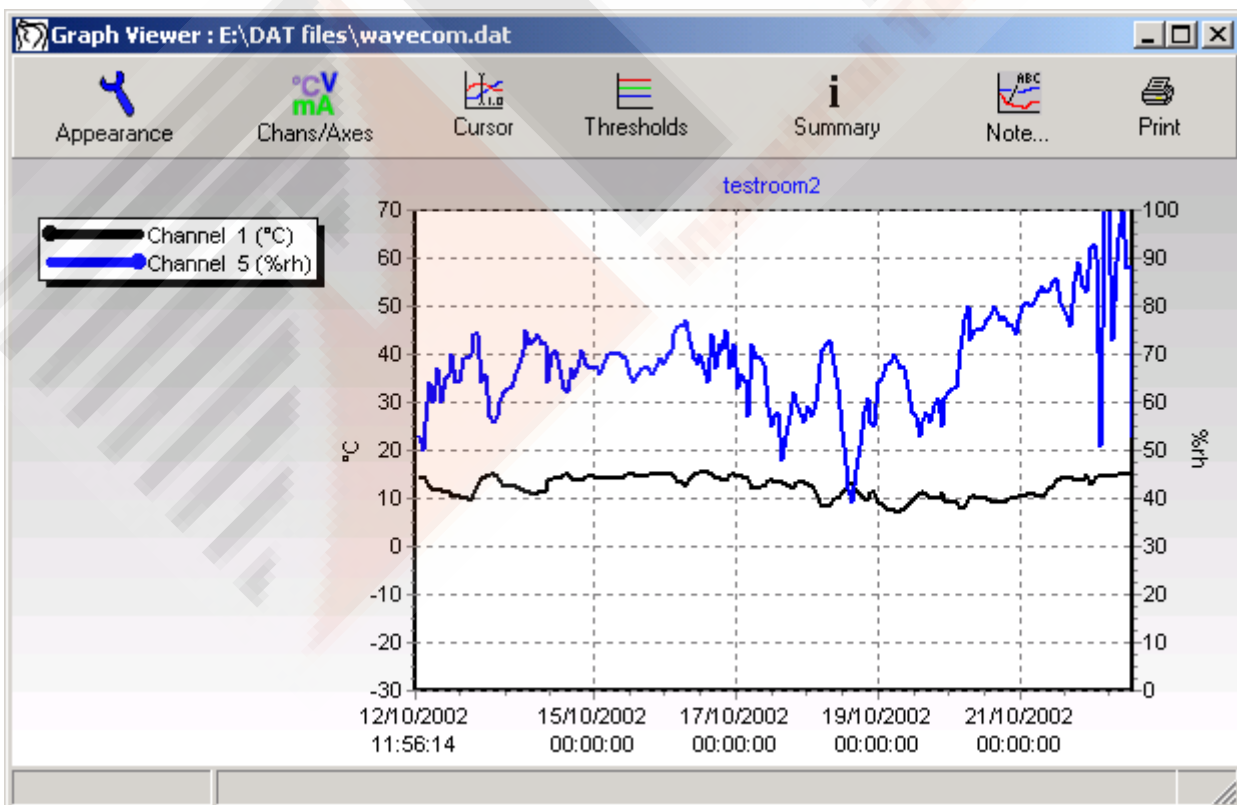
3 view modes are available: Paged view, Scrolling view or a Full time-span view.

Darca Plus Tour - Logging and Downloading



- The VCR-style buttons in the centre provide control for Starting / Stopping logging and Clearing the memory in the Squirrel.
- Once the Squirrel contains data it can be downloaded onto the PC with the Download Runs button.
- Data is stored as a binary datafile which can then be exported for viewing in a spreadsheet or graphed using Darca Plus's Graphing tool.

Darca Plus Tour - Graph Window



Darca Plus's sophisticated graphing window allows you to view your data quickly and easily, whilst at the same time having complete control over which channels are displayed and how. Features such as graph thresholds, graph cursors and graph notes contribute to this powerful data analysis tool.

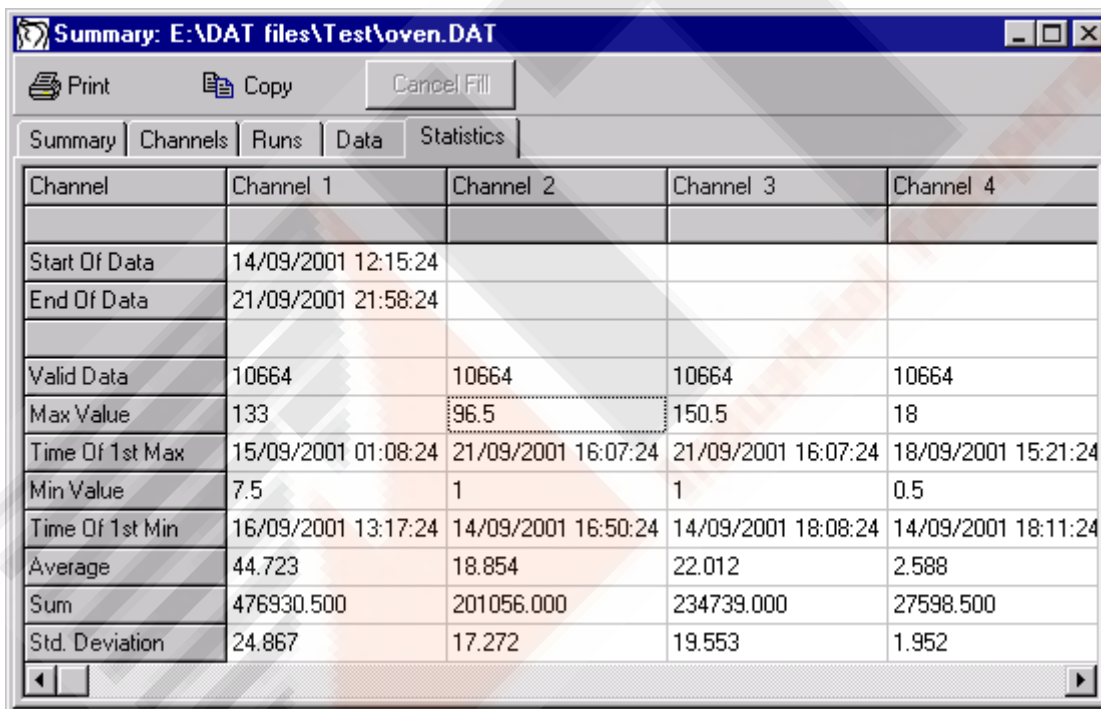
Key Features:

- Continuous and event inputs displayed one above the other
- 3D plots
- Animated zooming
- Plot colour and axis configuration may be saved
- Text comments can be added to points of interest
- Real time graphing of metered data

Features in detail:

- The appearance of the Graph Window, legend, gridlines and 3D orientation can be controlled with the Settings Window.
- The Graph Cursor allows you to view the raw data of a point on the graph by clicking on it with the mouse.
- Use the Graph Summary Window to view information about the Squirrel and its data, as well as the raw data itself and a statistical analysis of it.
- Plot channel thresholds on the graph with the Graph Thresholds tool. These will then be included in the statistical analysis.

Darca Plus Tour - Graph Summary Window



The screenshot shows a software window titled "Summary: E:\DAT files\Test\oven.DAT". It has a menu bar with "Print", "Copy", and "Cancel Fill". Below the menu bar are five tabs: "Summary", "Channels", "Runs", "Data", and "Statistics". The "Statistics" tab is active, displaying a table with the following data:

Channel	Channel 1	Channel 2	Channel 3	Channel 4
Start Of Data	14/09/2001 12:15:24			
End Of Data	21/09/2001 21:58:24			
Valid Data	10664	10664	10664	10664
Max Value	133	96.5	150.5	18
Time Of 1st Max	15/09/2001 01:08:24	21/09/2001 16:07:24	21/09/2001 16:07:24	18/09/2001 15:21:24
Min Value	7.5	1	1	0.5
Time Of 1st Min	16/09/2001 13:17:24	14/09/2001 16:50:24	14/09/2001 18:08:24	14/09/2001 18:11:24
Average	44.723	18.854	22.012	2.588
Sum	476930.500	201056.000	234739.000	27598.500
Std. Deviation	24.867	17.272	19.553	1.952

The Graph Summary Window is available by clicking the Summary button on the graph toolbar. It provides numerical information about the data.

The five tabs display the following information:

- Summary - includes information about the Squirrel, the number of channels in the datafile and the logging mode
- Channels - information about each channel's input type, range and units
- Runs - the Start Time, Stop Time, Run Size and Logging Interval of each run
- Data - the data itself in numerical form
- Statistics - various useful statistics calculated from the data (as shown above)